

EUROSTUDENT VI

Social and
Economic
Conditions of
Student Life in
Europe

EUROSTUDENT VI

Staða íslenskra stúdenta í
alþjóðlegum samanburði:
aðgengi, efnahagur og
tækifæri til náms erlendis

May 4th, 2018

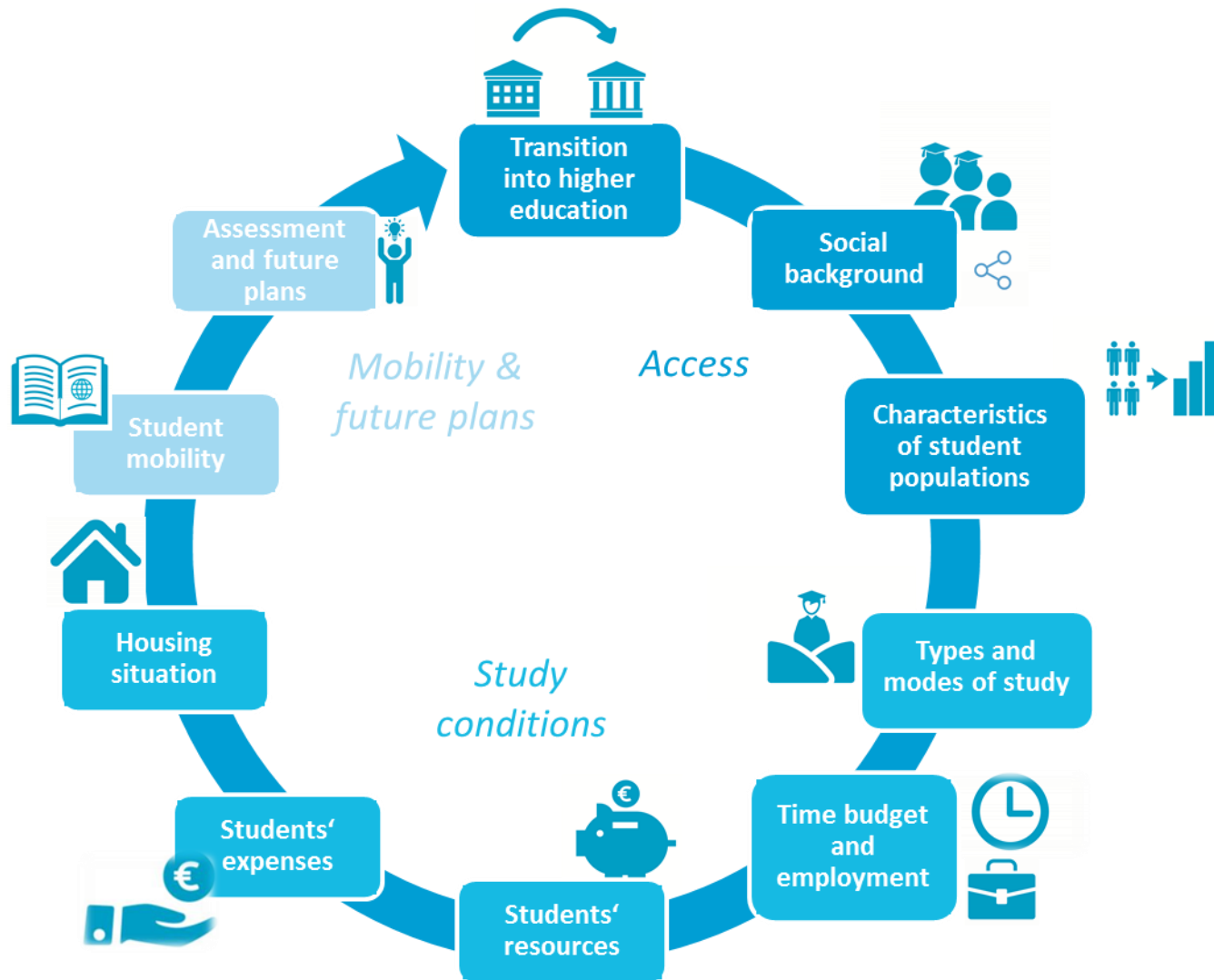
Reykjavik, Iceland

Overview of the presentation

1. EUROSTUDENT in a nutshell
2. EUROSTUDENT methodology
3. Selected comparative results
4. Key findings on cross-national (short-term) mobility
5. Key outputs



1. The EUROSTUDENT topics



Pilot Study EURO-Student

1994 - 1997

- 4 participating countries: Austria, Germany, France, Italy
- Goal: 1st reliable comparison of higher education (higher education) systems



participation in HE



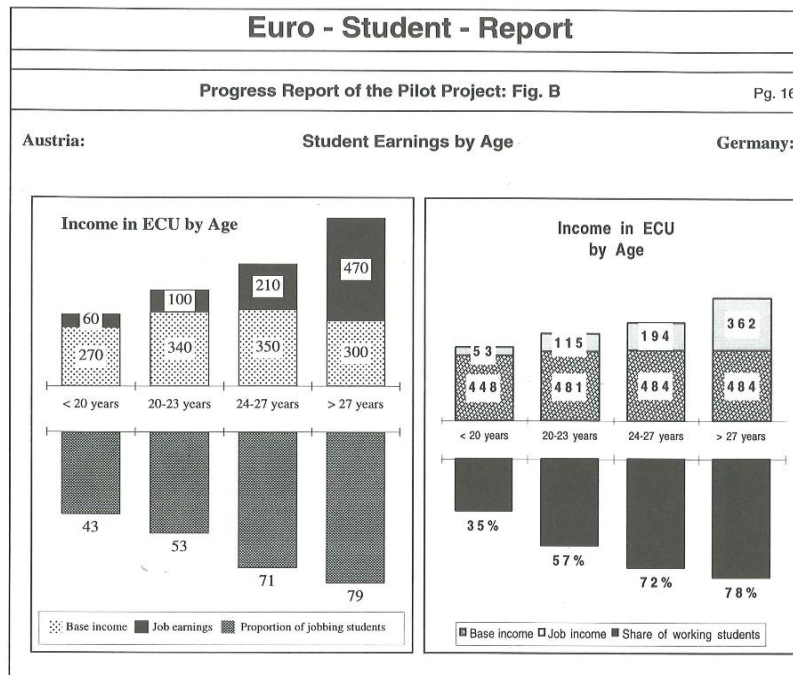
student housing

4 core topics

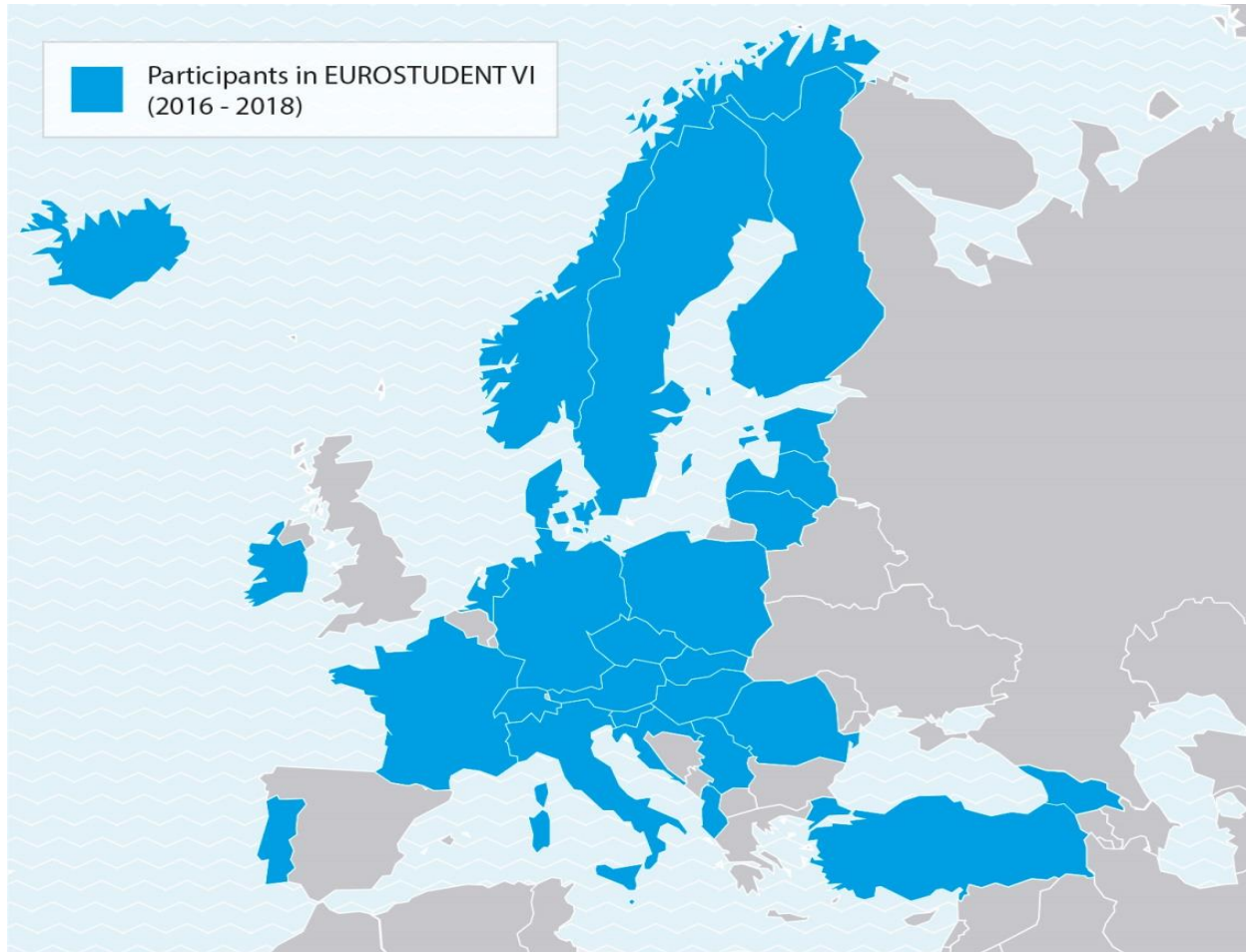


financing of studies

student mobility



The EUROSTUDENT project structure



- Network of
 - Participant countries
 - EUROSTUDENT consortiums (seven members)
 - Steering board

The EUROSTUDENT consortium

- German Centre for Higher Education Research and Science Studies (DZHW, Germany; central coordinator),
- Institute for Advanced Studies (IHS, Austria)
- ResearchNed (the Netherlands)
- MOSTA Research and Higher Education Monitoring and Analysis Centre (Lithuania)
- Praxis Centre for Policy Studies (Praxis, Estonia)
- the Maltese National Commission for Further and Higher Education (NCFHE, Malta)
- the Swiss Federal Statistical Office (FSO, Switzerland)



ResearchNed

MOSTA
MONITORING AND ANALYSIS



POLITIKAUURINGUTE KESKUS
PRAXIS
CENTER FOR POLICY STUDIES



National Commission for
Further and
Higher Education
Malta



Schweizerische Eidgenossenschaft
Confédération suisse
Confederazione Svizzera
Confederaziun svizra

Swiss Confederation

Federal Department of Home Affairs FDHA
Federal Statistical Office FSO

The EUROSTUDENT steering board

- European Commission (EC)
- European Students' Union (ESU)
- Bologna Follow-Up Group (BFUG)
- German Federal Ministry of Education and Research (BMBF)
- Dutch Ministry of Education, Culture and Science (MinOCW)
- as well as three country representatives of the fee-paying countries

2. Basic Principles & methodology

Relevance

- Working groups with external participation
- Reference to on-going discussions, involvement in BFUG

Comparability

- Standard target group & core questionnaire with explanations
- Handbooks on data cleaning & delivery
- Standardised data delivery using common syntax
- Preparatory seminars

Interpretation

- National comments by research teams
- National profiles

Accessibility

- Publicly available data
- Different reporting formats



2. EUROSTUDENT focus groups

Socio-demographic characteristics of students



Age

- < 22 years
- 22 – 24 years
- 25 – 29 years
- 30 years and older



Educational background

- No higher education background (ISCED 0 – 4)
- Higher education background (ISCED 5 – 8)



Impairments

- Students with impairments
- Students without impairments



Sex

- Male
- Female



Migration background

- Second generation migrant students with national educational background
- Students without migration background and national educational background

Living conditions



Financial difficulties

- Student with financial difficulties
- Students without financial difficulties



Housing

- Students living with parents
- Students not living with parents



Dependency on income source

- Dependent on family
- Dependent on self-earned income
- Dependent on public student support



Working students

- Students not working
- Students working up to 20h/week
- Students working > 20h/week

Study-related characteristics

Current study situation



Field of study

- Arts and humanities
- Social sciences, journalism & information
- Business, administration & law
- Natural sciences, mathematics & statistics
- ICTs
- Engineering, manufacturing & construction
- Agriculture, forestry, fisheries & veterinary
- Health & welfare
- Services



Study intensity

- Low intensity students (< 20h)
- Medium intensity students (20h - 40h)
- High intensity students (> 40h)



Type of study programme

- Short-cycle
- Bachelor
- Master
- Short national degree
- Long national degree
- Other



Type of HEI

- University
- Non-university (e.g. professional HEI, university of applied sciences)

Study-related background



Access route

- Standard access route
- Alternative access route



Transition route

- Direct transition students (up to 24 months)
- Delayed transition students (> 24 months)



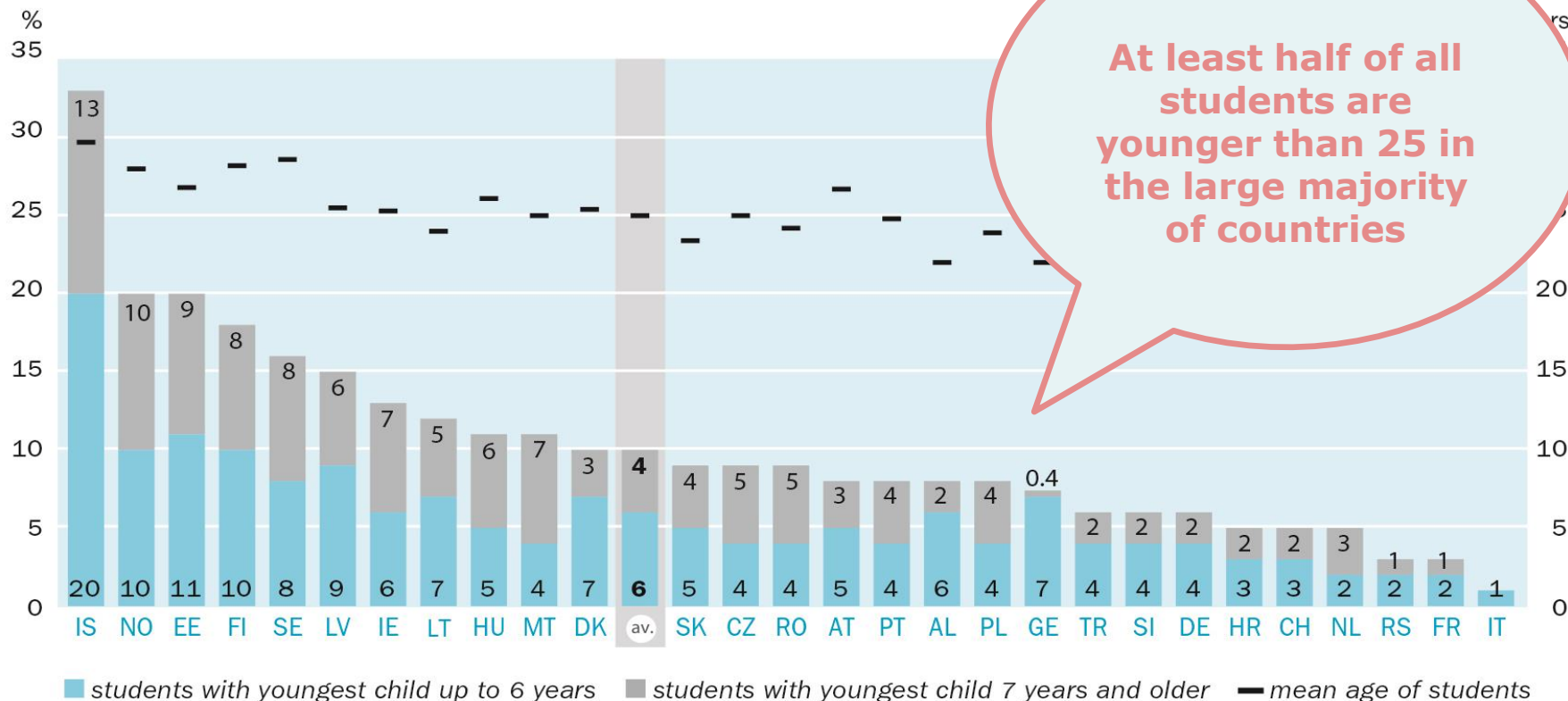
International students

- Domestic student
- International students

3. Selected comparative results

Students with children by age of youngest child and mean age of students

Share of students (in %)



Data source: EUROSTUDENT VI, A.1, A.12, & A.13.

EUROSTUDENT question(s): 5.0 When were you born?, 5.6 Do you have children?, 5.7 How old is your youngest child?

Deviations from EUROSTUDENT conventions: AT.

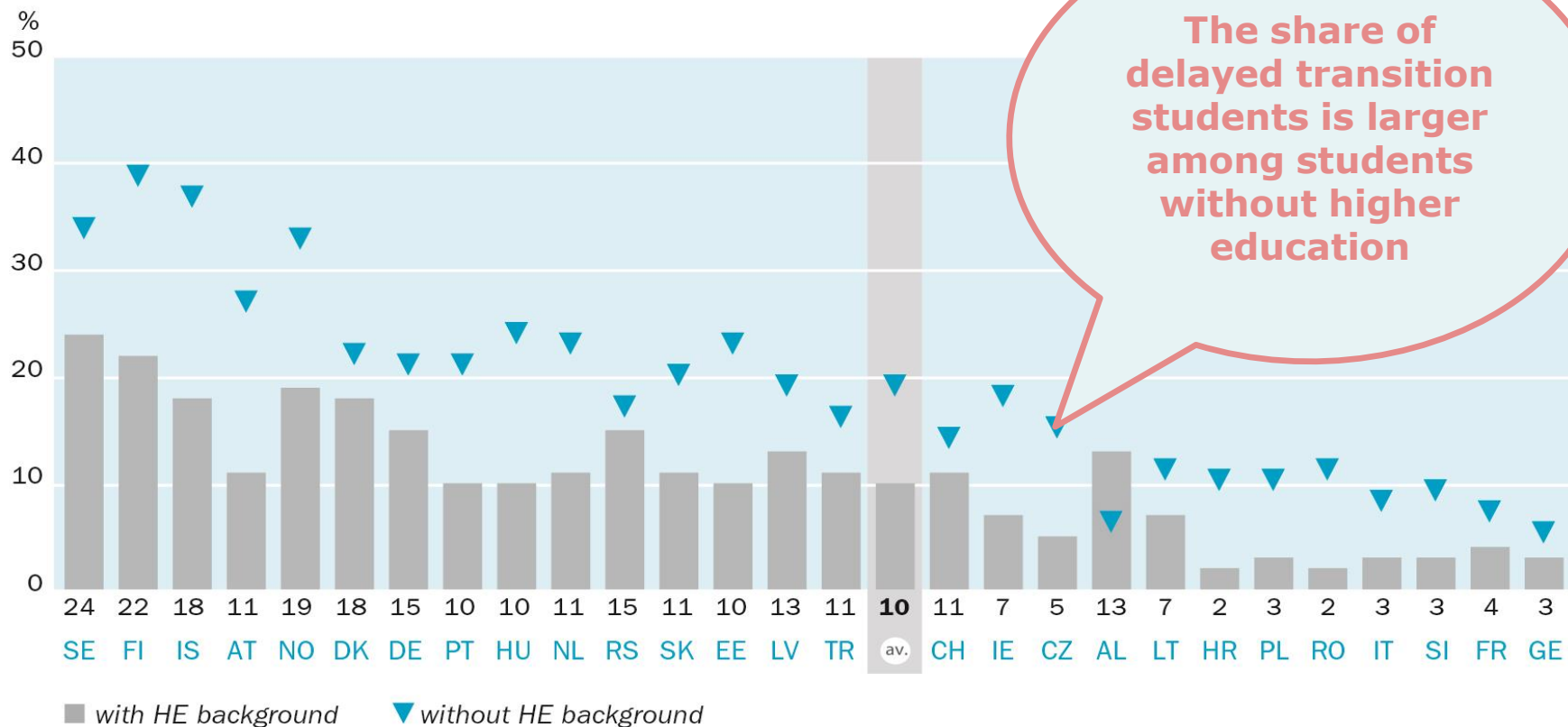
Deviations from EUROSTUDENT standard target group: AL, DE, IE, IT, LV, RS.

Source: EUROSTUDENT VI

3. Selected comparative results

Delayed transition students by educational background

Share of students (in %)



The share of delayed transition students is larger among students without higher education

Data source: EUROSTUDENT VI, B.4. **No data:** MT.

EUROSTUDENT question(s): 2.3 How long after leaving the #regular school system for the first time did you enter higher education for the first time?

Deviations from EUROSTUDENT conventions: AT, CH, DE, FR, HU.

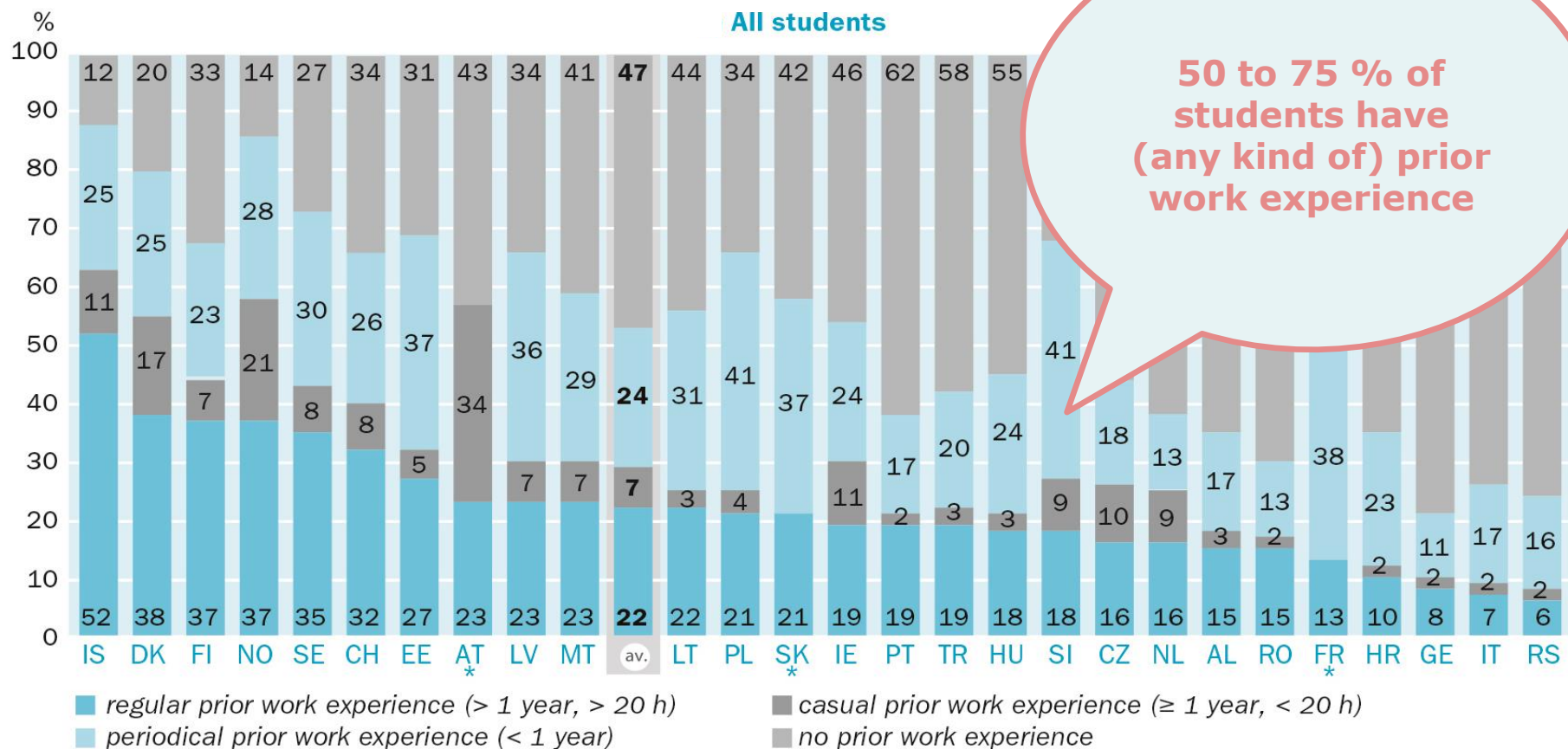
Deviations from EUROSTUDENT standard target group: AL, DE, IE, IT, LV, RS.

Source: EUROSTUDENT VI

3. Selected comparative results

Students with work experience prior to entering higher education

Share of students (in %)



Data source: EUROSTUDENT VI, B.3. **No data:** Prior work experience: DE; alternative access route: FI, IT, TR. **Too few cases:** Alternative access route: SK.

EUROSTUDENT question(s): 2.7 Did you have any paid job(s) prior to entering higher education for the first time?

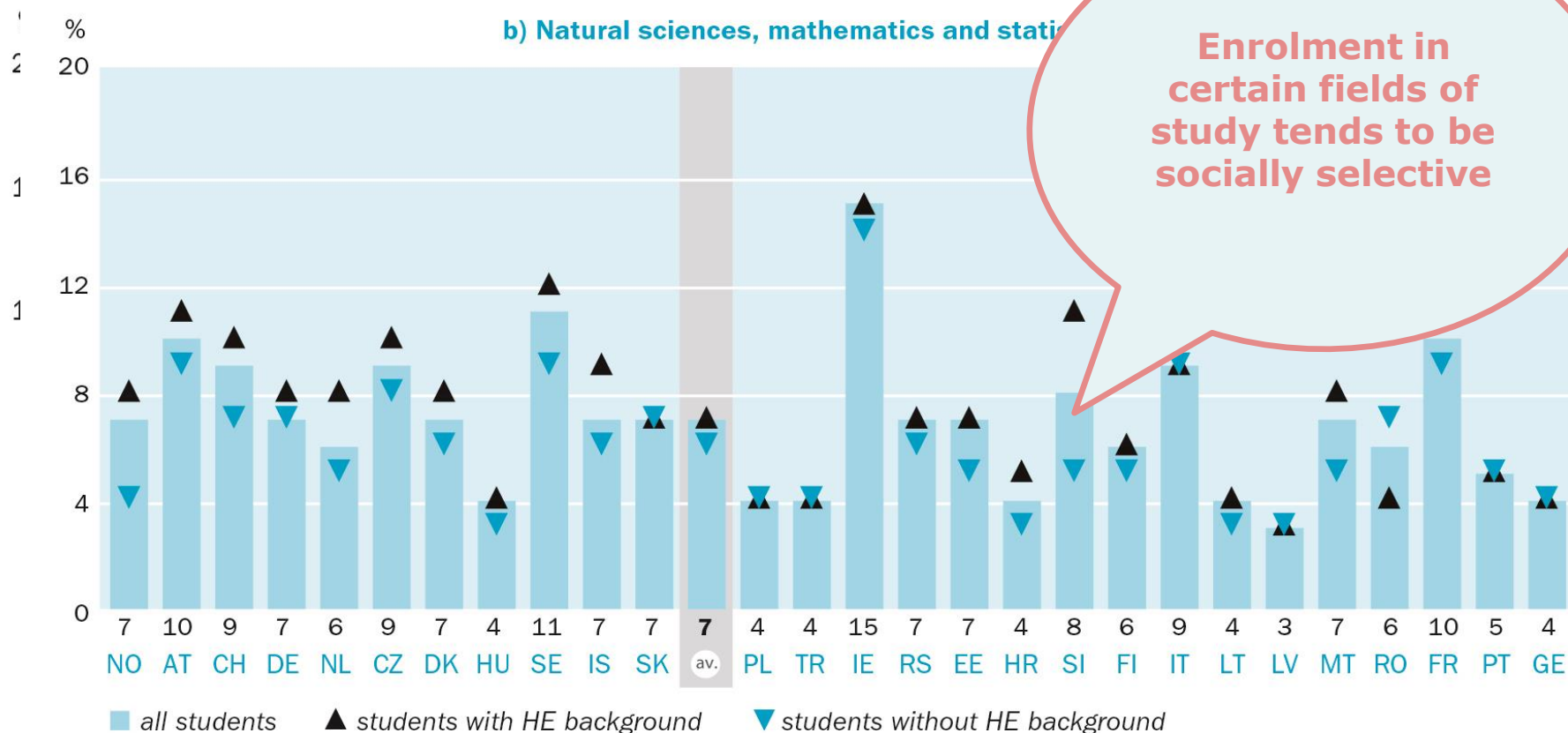
Deviations from EUROSTUDENT conventions: AT, FR, SK.

Deviations from EUROSTUDENT standard target group: AL, DE, IE, IT, LV, RS.

3. Selected comparative results

Students' enrolment in selected fields of study by educational background

Share of students (in %)



■ all students ▲ students with HE background ▼ students without HE background

Data source: EUROSTUDENT VI, C.3. No data: AL.

EUROSTUDENT question(s): 1.6 What is your current (main) study programme?

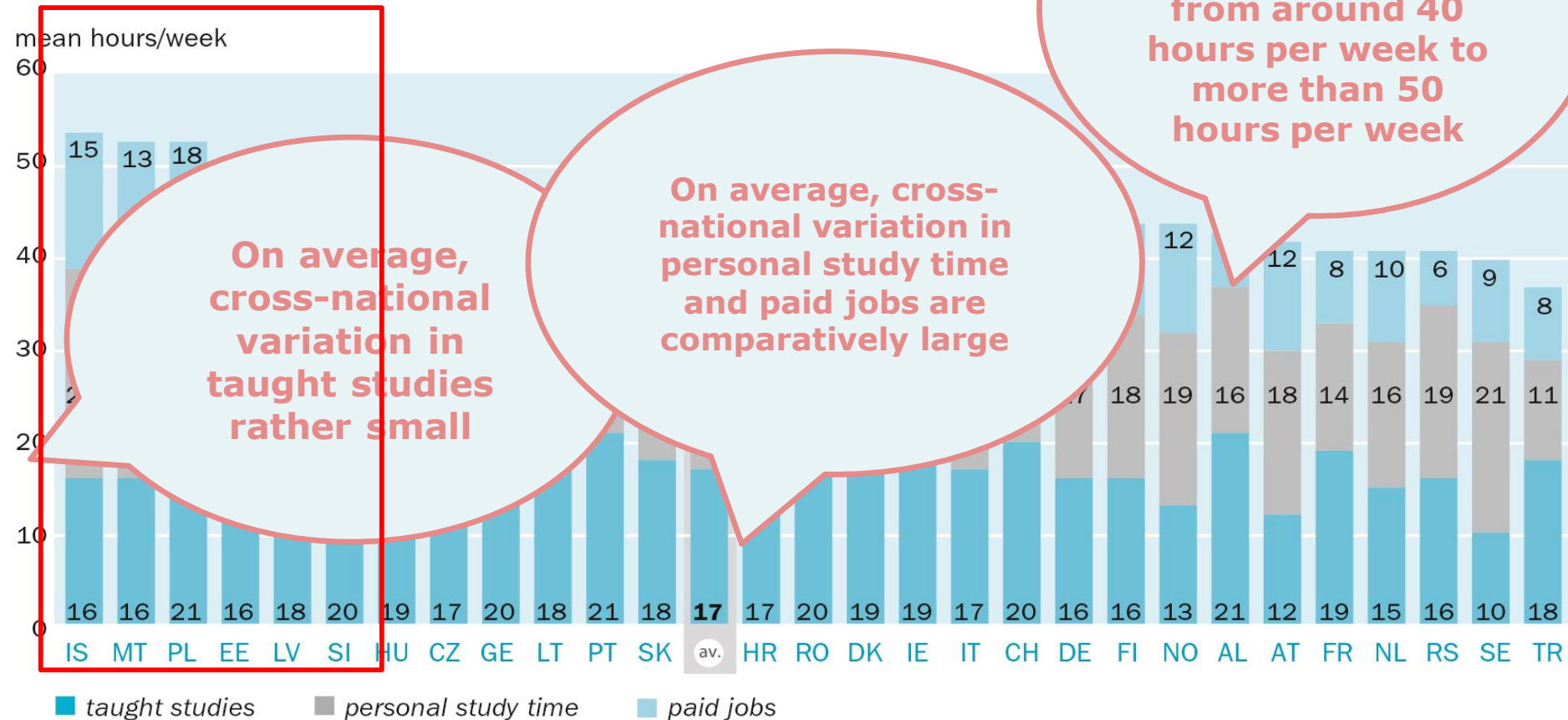
Deviations from EUROSTUDENT conventions: CH.

Deviations from EUROSTUDENT standard target group: AL, DE, IE, IT, LV, RS.

3. Selected comparative results

Time budget of students by type of activity

Mean hours/week

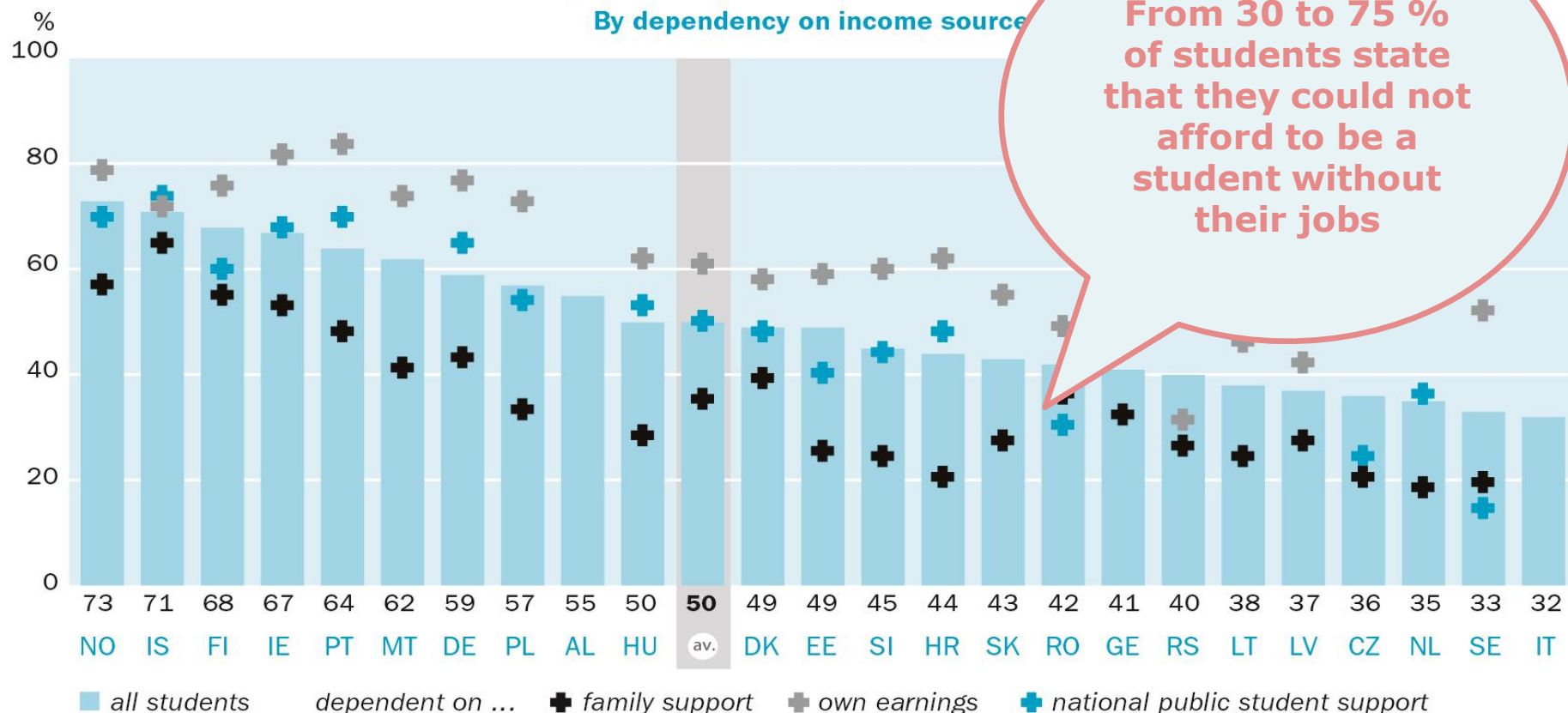


Data source: EUROSTUDENT VI, H.4, H.7 & H.19.

3. Selected comparative results

Students who could not afford to study without paid jobs

Share of students with paid jobs during the lecture period (in %)



Data source: EUROSTUDENT VI, H.34. **No data:** AT, CH, FR, TR; for dependency on income source: AL, IT; parental wealth: IT. **Too few cases:** For dependency on national public student support: GE, LT, LV, MT, RS, SK.

EUROSTUDENT question(s): 3.8 To what extent do the following statements apply to your situation?

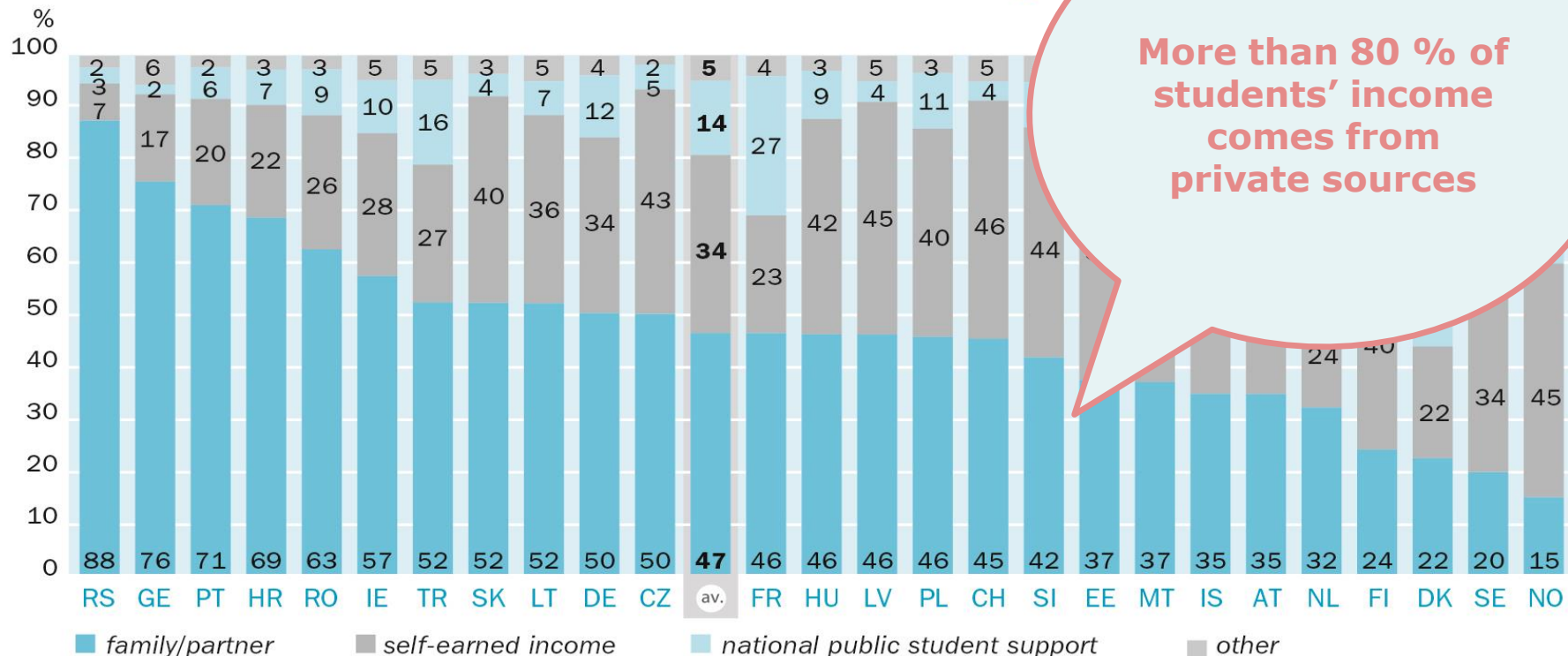
Deviations from EUROSTUDENT survey conventions: AT.

Deviations from EUROSTUDENT standard target group: AL, DE, IE, IT, LV, RS.

3. Selected comparative results

Composition of students' funding

Based on total monthly income including transfers in kind. Source of funding (in %, ● main source)



Data source: EUROSTUDENT VI, G.20b. **No data:** AL, IT.

EUROSTUDENT question(s): 3.3 What is the average monthly amount at your disposal from the following sources during the current lecture period?, 3.4 What are your average expenses for the following items during the current lecture period?

Note(s): The category "other" includes in this case also income from sources from outside the respective survey country. Transfers in kind are expenses of parents/partner/or others in favour of the students.

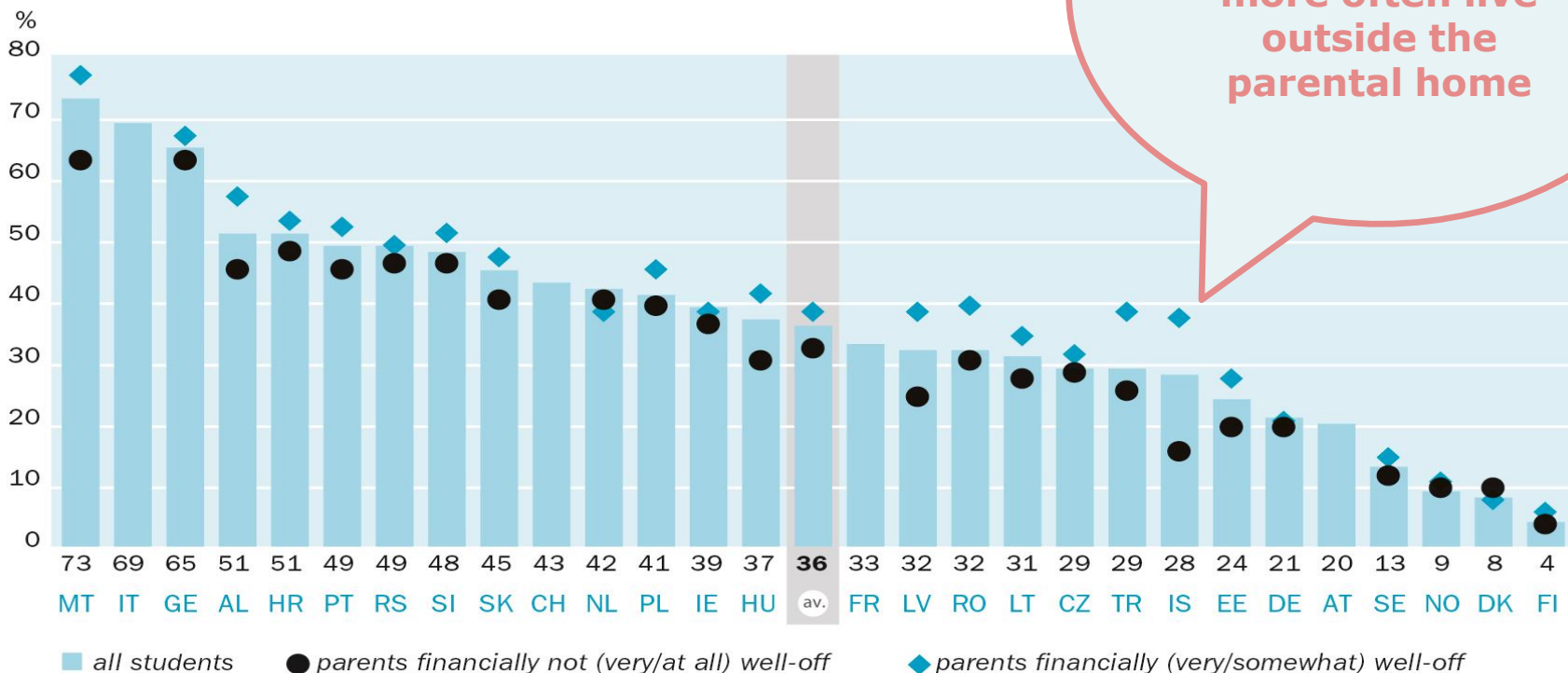
Deviations from EUROSTUDENT conventions: CH, CZ.

Deviations from EUROSTUDENT standard target group: AL, DE, IE, IT, LV, RS.

3. Selected comparative results

Students living with parents by parents' financial status

Share of students (in %)



Data source: EUROSTUDENT VI, D.3 & E.1. **No data:** Parents' financial status: AT, CH, FR, IT.

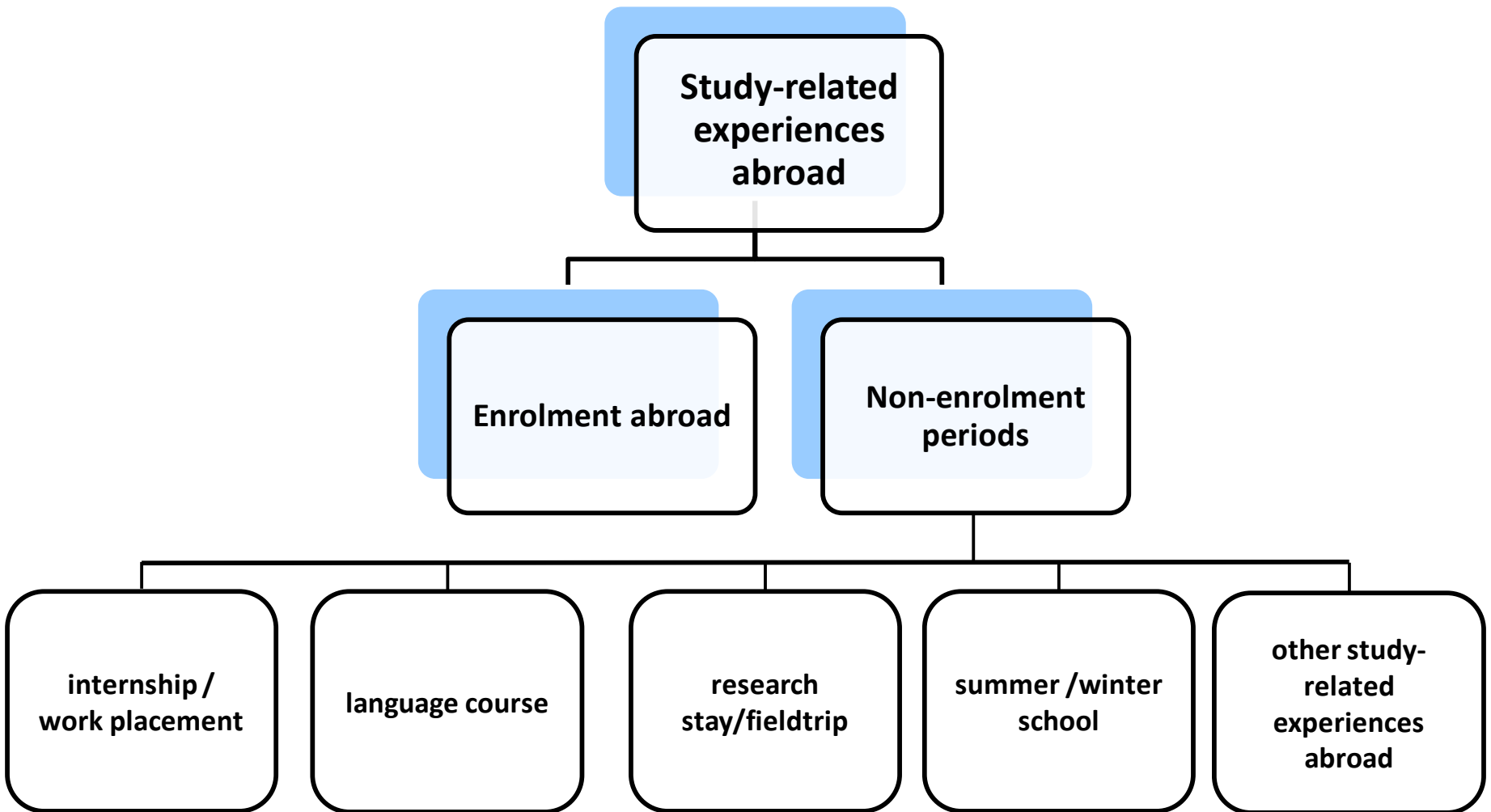
EUROSTUDENT question(s): 3.0 Who do you live with during the current lecture period (Monday to Friday)?, 6.1 How well-off financially do you think your parents are compared with other families?

Note(s): Interpretation aid: In Malta, 73 % of all students live with parents. Within the group of students whose parents are financially not well-off 63 % live with parents and among students whose parents are financially well-off 77 % live with parents. Values above the country abbreviations present the share of all students living with parents.

Deviations from EUROSTUDENT survey conventions: FR, IT.

Deviations from EUROSTUDENT standard target group: AL, DE, IE, IT, LV, RS.

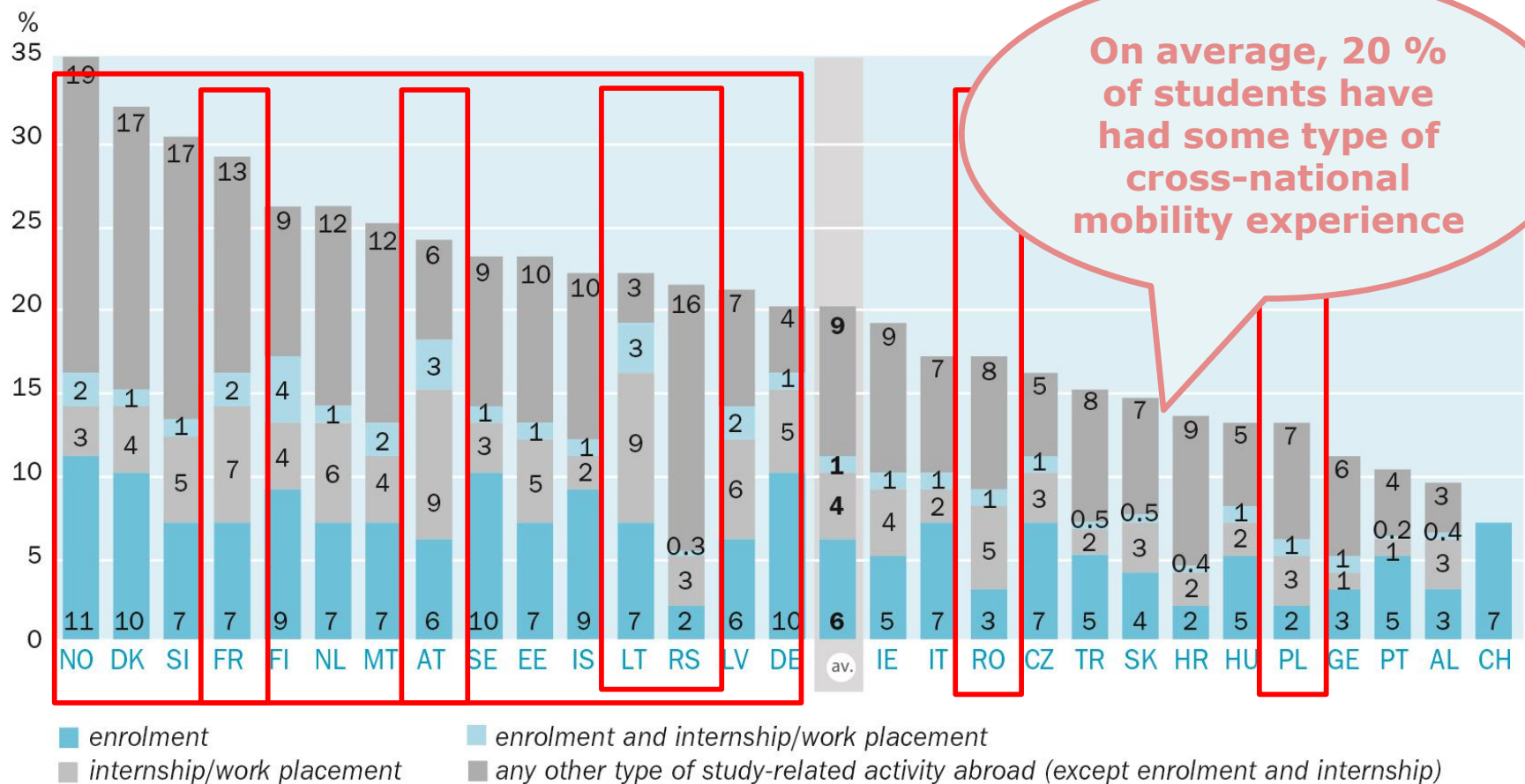
4. Types of temporary international student mobility



4. Types of mobility

Students' mobility experience by type of study-related stay abroad

Share of students (in %)

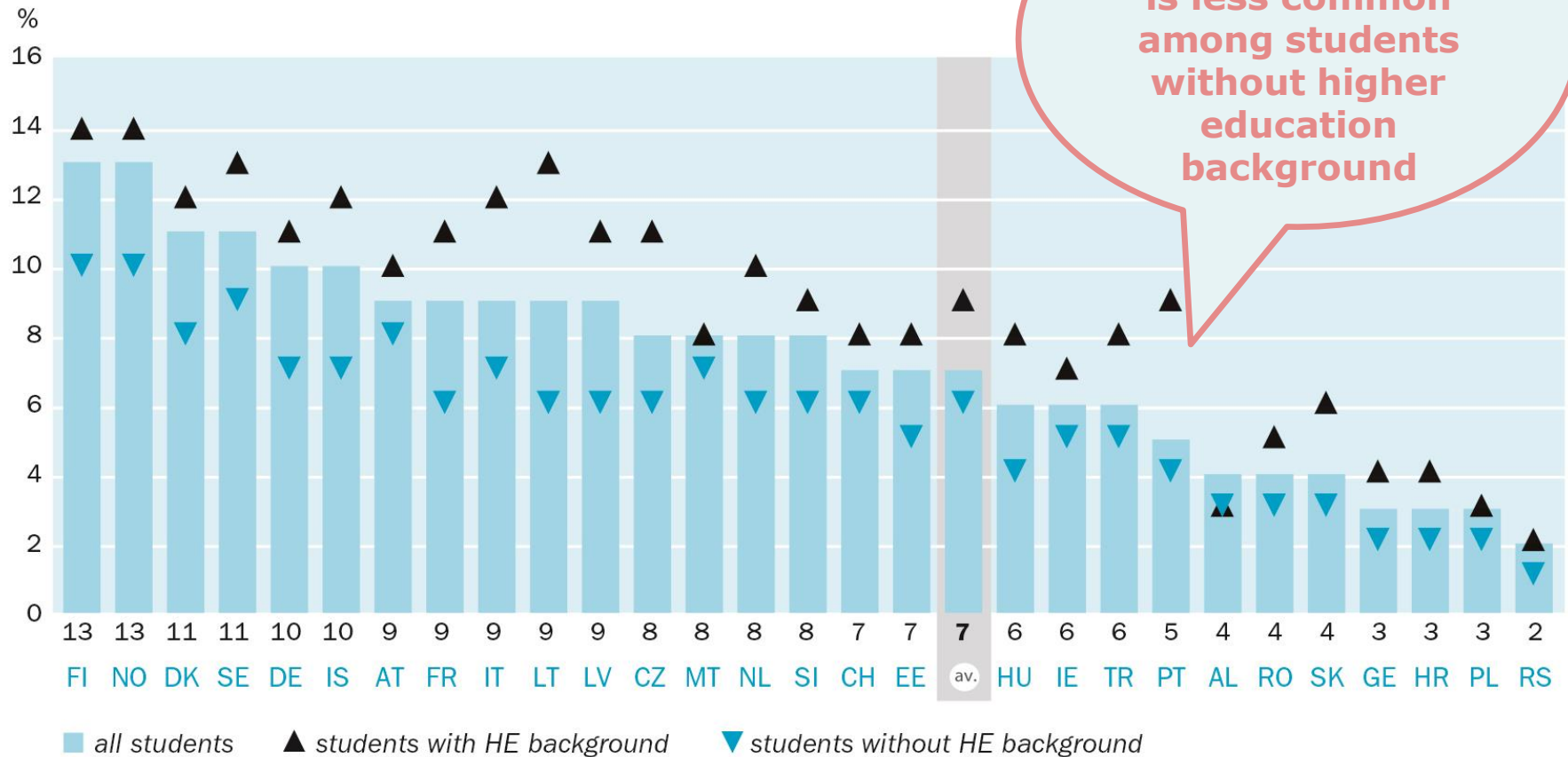


Data source: EUROSTUDENT VI, I.2. No data: Internship and other types: CH.

4. Differences in enrolment between different student groups

Temporary enrolment abroad by educational background

Share of students (in %)

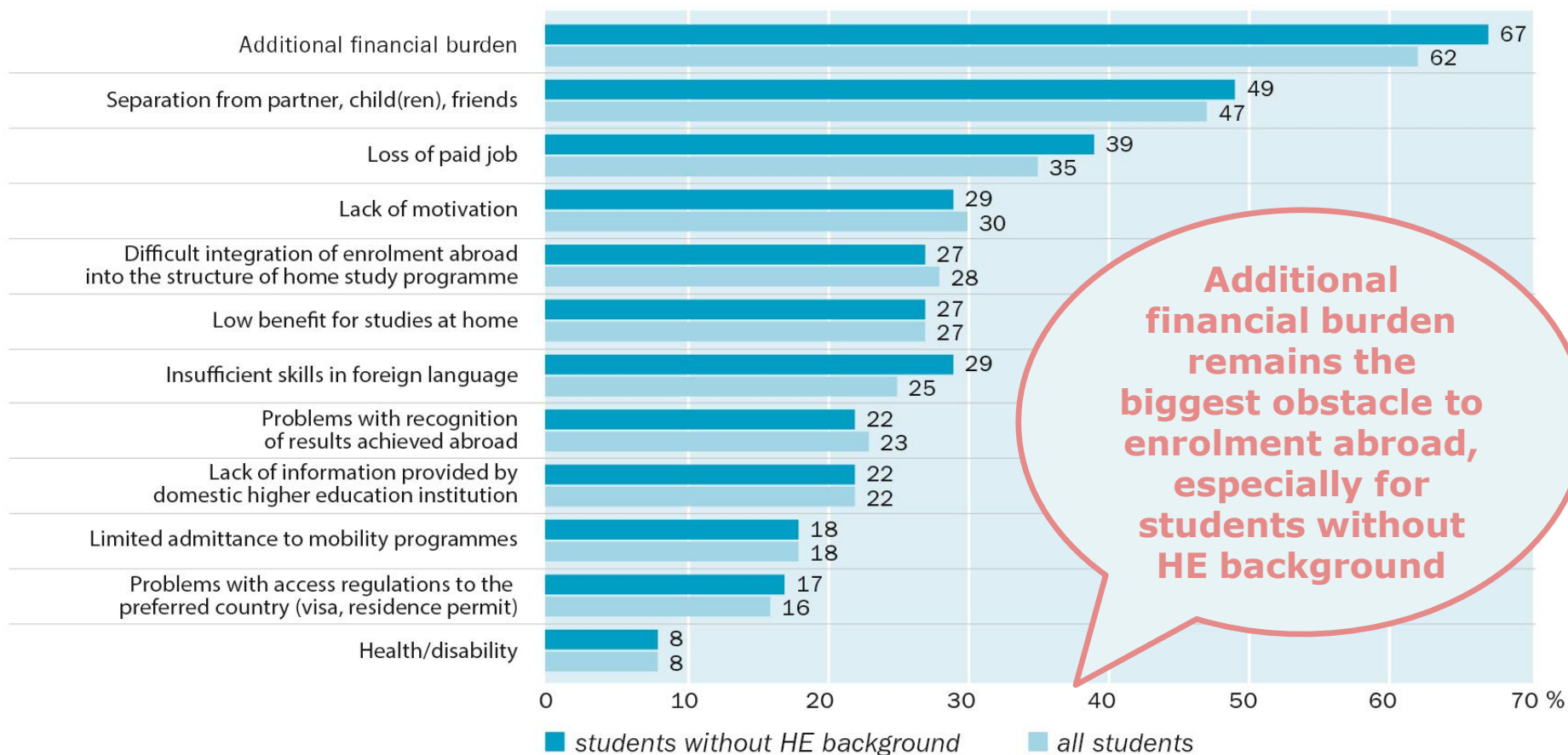


Data source: EUROSTUDENT VI, I.3.

Note(s): Parents educational background consists of three categories, third category (do not know) not shown here but contained in values for all students.

Obstacles to temporary enrolment abroad by education background

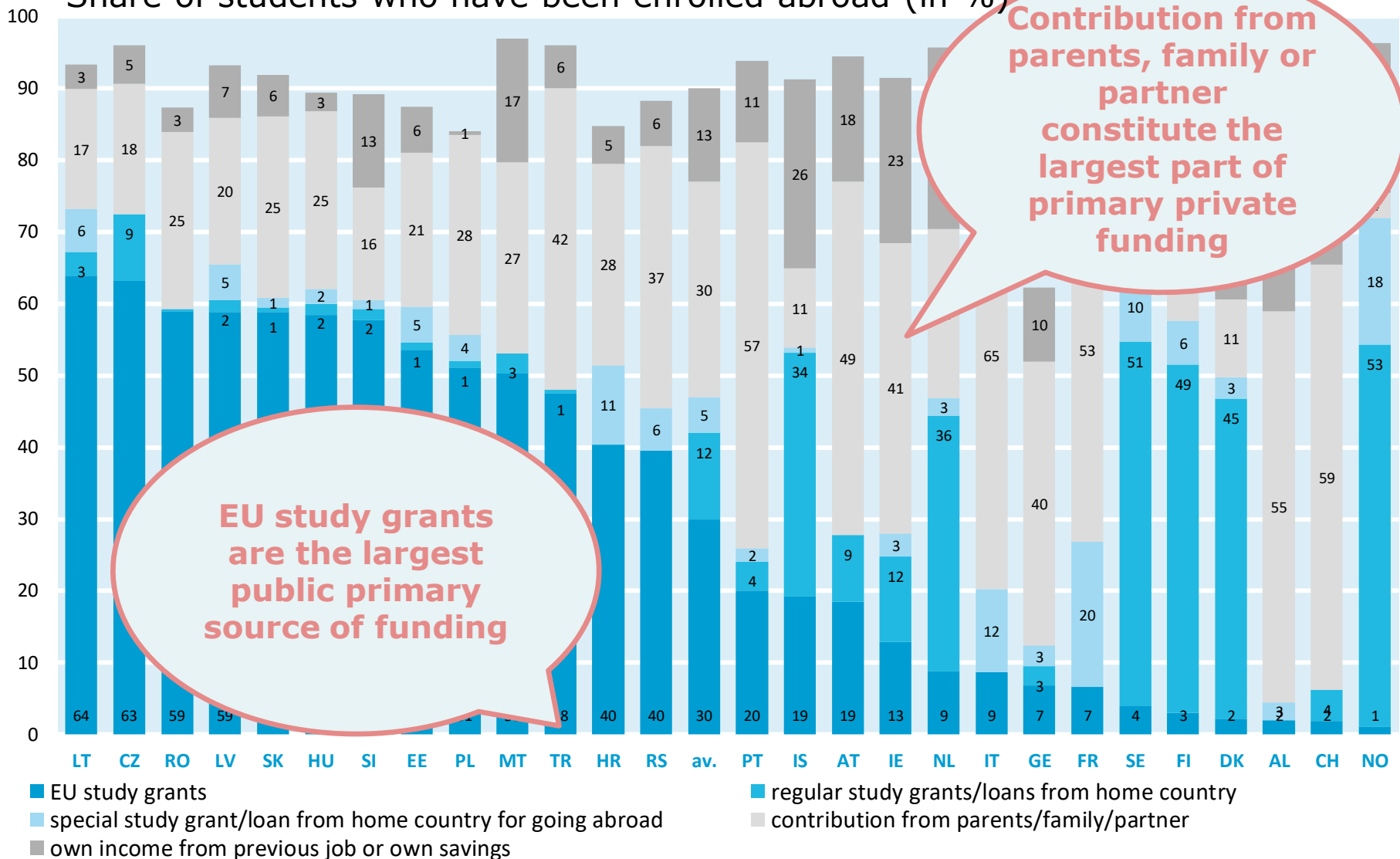
Cross-country average share of students who do not plan to enrol abroad (in %)



Data source: EUROSTUDENT VI, I.20. **No data:** FR; problems with access regulations to the preferred country (visa, residence permit): AT, DE; limited admittance to mobility programmes: AT, CH, IE; health/disability: AT, CH, DE; loss of paid job, lack of motivation, difficult integration of enrolment abroad into the structure of my home study programme: IE.

% Primary source of funding used for enrolment abroad

Share of students who have been enrolled abroad (in %)

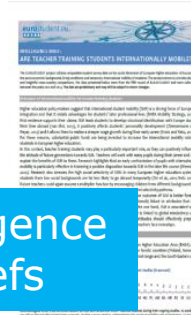


Data source: EUROSTUDENT VI, I.12. **No data:** DE; for item "regular study grants/loans from home country": AL, FR, HR, IT, RS; for item "special study grant/loan from home country for going abroad": AT, CH, CZ, MT, RO.

5. Outputs: different formats for different purposes



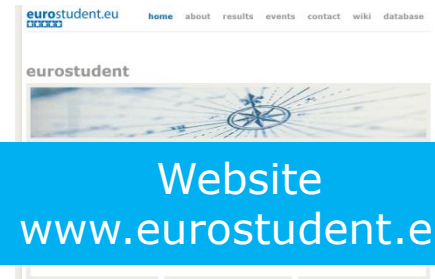
Synopsis of Indicators



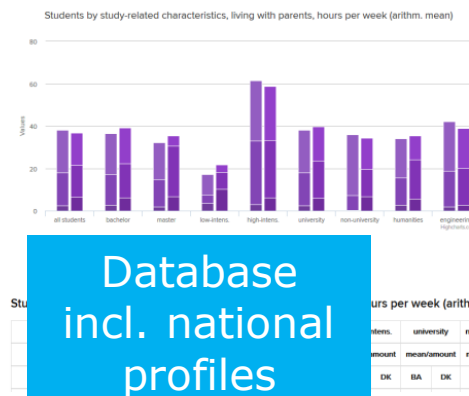
Intelligence Briefs



EUROSTUDENT VI Short Report



Website
www.eurostudent.eu



Database incl. national profiles



Bologna Process Implementation Report



Thematic Review



Twitter
[@eurostudenttw](https://twitter.com/eurostudenttw)

Thanks for your attention!

Questions?

Comments ?

Remarks?

Contact

Dr. Eva Maria Vögtle

German Centre for Higher Education Research and Science Studies (DZHW)

Lange Laube 12
30159 Hannover

Phone + 49 511 450 670-157
Fax + 49 511 450 670-960
E-Mail voegtle@dzhw.eu

EUROSTUDENT VI Consortium Members



ResearchNed



National Commission for
Further and
Higher Education
Malta



Schweizerische Eidgenossenschaft
Confédération suisse
Confederazione Svizzera
Confederaziun svizra

Swiss Confederation

Federal Department of Home Affairs FDHA
Federal Statistical Office FSO

Funded with the support of all participating countries. Co-funded by the Erasmus+ Programme of the European Union and the following bodies.



Federal Ministry
of Education
and Research



Ministry of Education, Culture and
Science of the Netherlands

DZHW

eurostudent.eu
★★★★★

References

Hauschildt, K., Vögtle, E. M., Gwosć, C. (2018). *Social and Economic Conditions of Student Life in Europe. Synopsis of Indicators. EUROSTUDENT VI 2016–2018.* Bielefeld: W. Bertelsmann Verlag.